

versatile

▣ DP-8020E



Digital Imaging Systems

High Speed; Up to 20 ppm
Digital Printing / Copying

Versatile Scanner with Internet Fax

Standard Document Handling Software

Security Features

DP-8020E Options

Hard Disk

Hard Disk Drive Unit
DA-HD18
(Optional Image Memory is required)

Flash Memory
4MB Flash Memory / 8MB Flash Memory
UE-410047F / UE-410048F

Software

Accounting System

Accounting Software
DA-WA10

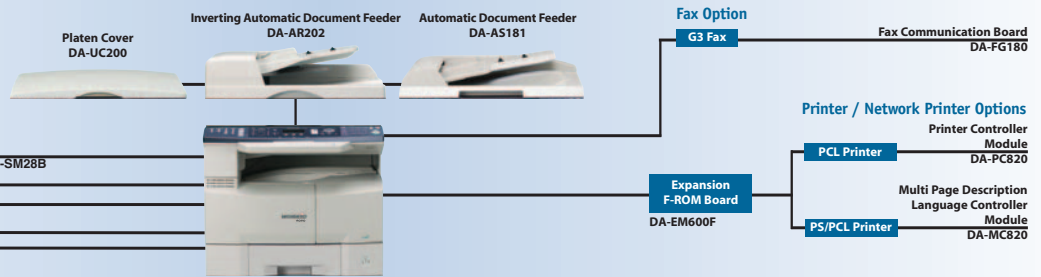
Other Options

Keyboard Option
DA-KB180

Key Counter Harness Kit
DA-KH180

Image Memory Options

16MB / 64MB / 128MB
DA-SM16B / DA-SM64B / DA-SM28B

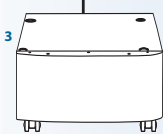


Full-Height Configurations

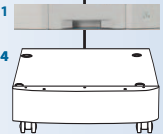
Paper Feed Options

For Wheelchair Configurations

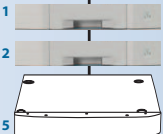
1-Paper Tray Configuration



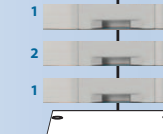
2-Paper Tray Configuration



3-Paper Tray Configuration

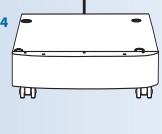


4-Paper Tray Configuration

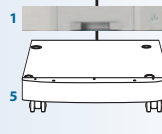


- 1- 2nd/4th Paper Feed Module DA-DS184
- 2- 3rd Paper Feed Module DA-DS185
- 3- 1-Drawer Configuration Stand DA1D18A
- 4- 2-Drawer Configuration Stand DA1D18B
- 5- 3&4-Drawer Configuration Stand DA1D18C

1-Paper Tray Configuration



2-Paper Tray Configuration



DP-8020E Specifications

General

Type	Desktop
Copy / Print Process	Laser Indirect Electrostatic
Developing Process	Dry Dual Component
Automatic Document Feeder (Option)	50 sheets (Letter, 20 lb, 75 g/m ²)
Inverting Automatic Document Feeder (Option)	50 sheets (Letter, 20 lb, 75 g/m ²)
Paper Feed	550-sheet paper tray x 1 + 50-sheet bypass Max. 2,250 sheets with option
Paper Weight	Paper Tray: 16 to 24 lb (60 to 90 g/m ²) Bypass: 15 to 34 lb (55 to 133 g/m ²)
Automatic Duplex Unit	Standard
Power Requirements	AC 120, 60 Hz, 12A
Power Consumption	Max.: Less than 1.3 kW Power save mode: Approx. 19 W Sleep mode: Approx. 8.5 W
Warm-up Time (68°F/20°C)	Approx. 30 sec. (Main power switch ON) Approx. 30 sec. (Sleep mode)
Dimensions (W x D x H)*1 (H = Height To Platen Glass)	22.0" x 21.9" x 18.1" (558 x 557 x 460 mm) (Excluding optional equipment)
Weight*1	Approx. 95.5 lb (43.3 kg) (Excluding optional equipment)

Printer

Network Printer Interface	Ethernet 10Base-T/100Base-TX
Communication Protocol	TCP/IP, LPD (LPR), IPP*, AppleTalk (PS), SNMP, DHCP
Local Printer Interface	USB
Printer Language (Standard) (Option)	Panasonic Printing System for Windows® PCL 5e Emulation, PCL 6 Emulation Adobe® PostScript®3™
Printing Speed*2 (from 1st paper tray)	20 ppm
Paper Size	Paper Tray: Ledger-Invoice Bypass: Ledger-Envelope (#10) 1,200 dpi equivalent x 600 dpi (PCL, PS) 600 dpi x 600 dpi, 300 dpi x 300 dpi (GDI, PCL, PS)
Printing Resolution	1,200 dpi equivalent x 600 dpi (PCL, PS) 600 dpi x 600 dpi, 300 dpi x 300 dpi (GDI, PCL, PS)
Printer Memory	20 MB
PCL/PS Spool Memory	6 GB with optional 40 GB HDD
Compatible Client Operating Systems	Windows® XP/2000/Server 2003, 98, Me, Windows NT® 4.0 MacOS 8.6-10.4*3
Compatible Network Operating Systems	Windows NT 4.0, Windows 2000/Server 2003, Unix (LPR)*4, Linux (LPR)*4

Digital Copier

Resolution	600 x 600 dpi
Gray Scale	256 steps
First Copy Time	Approx. 6.9 sec.
Multi Copy Speed*2	20 cpm (from 1st Paper Tray)
Maximum Original Size	Ledger
Copy Size	Ledger-Invoice
Copy Ratio	Enlargement (fixed) 200%, 155%, 129%, 121% Reduction (fixed) 79%, 77%, 65%, 61%, 50%
Zoom (variable)	50-200% (in 1% increments)
Multiple Copy	1 to 999, Automatic reset to 1
Exposure Control	Text, Text/Photo, Photo
Sort Memory (Standard) (Option)	16 MB Base memory plus 16 MB / 64 MB / 128 MB 12 GB (with optional 40 GB HDD)

Network Scanner

Network Scanner Interface	Ethernet 10Base-T/100Base-TX
Maximum Scanning Size	Ledger
Scanning Resolution	150 dpi x 150 dpi, 300 dpi x 300 dpi, 600 dpi x 600 dpi
Scanning Speed*5	Approx. 1.1 sec. (Letter portrait in 150 dpi x 150 dpi, 300 dpi x 300 dpi from ADF)
Coding Scheme	JBIG / MMR / MR / MH
Data Format	TIFF, PDF

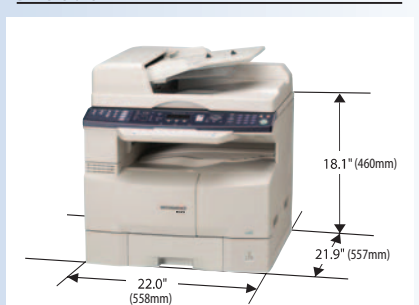
G3 Fax (Option)

Compatibility	ITU-T Group 3, ECM
Modem Speed	33.6 kbps
Coding Scheme	JBIG / MMR / MR / MH
Scanning Speed*5	Approx. 0.7 sec. (Letter portrait in Standard or Fi ne mode)
Transmission Speed*6	Approx. 2.7 sec.
Scanning Resolution	Standard: 203 dpi x 98 lpi (8 dots/mm x 3.85 lines/mm) Fine: 203 dpi x 196 lpi (8 dots/mm x 7.7 lines/mm) Super Fine: 406 dpi x 391 lpi (16 dots/mm x 15.4 lines/mm) 600 dpi: 600 dpi x 600 dpi
Effective Scanning Width	Ledger (11 1/2")
Recording Resolution	600 x 600 dpi
Standard Memory*7	2 MB (approx. 120 pages)
Optional Memory*7	Base memory plus 4 MB (320 pages)/8 MB (640 pages)
Speed Dials	1032 (abbreviation + optional keyboard + optional HDD)

Internet Fax/Scan to Email*8

Compatibility	IETF RFC 3965, ITU-T T.37
Communication Protocol	TCP/IP, SMTP, POP3, MIME, LDAP, DNS
Network Connectivity	Ethernet 10Base-T/100Base-TX (IEEE 802.3)
Data Format	TIFF (Profile S/F/J), PDF*9

Dimensions



Notes

- *1 Dimensions and weight are approximate.
- *2 Speeds are contingent upon applications, machine configuration, and status. Individual speeds may vary.
- *3 Multi Page Description Language Controller Module option required.
- *4 Printer Controller Module or Multi Page Description Language Controller Module option required.
- *5 Scanning speed applies to the feeding process from the top to the end of a single page test chart. The time for the feeding process does not include the time that it takes for the top edge of the page to reach the scanning point and page ejection. Time for entire storing process is not applied.
- *6 Transmission time applies to memory transmission of text data using only ITU-T Image No.1 between the same models at maximum modem speed. Transmission time may vary in actual usage. Usually public telephone lines can only support communication speeds of 28.8 Kbps or lower. Via PBX, transmission speed may fall back to a lower speed.
- *7 Based on ITU-T Image No.1 scanned in Standard mode.
- *8 Depending on the receiving machines capability, the document may not be correctly printed depending on the chosen resolution and document size.
- *9 I37 Internet Fax only supports TIFF format.

Design and specifications are subject to change without notice.

Microsoft® Windows® and Windows Server® are registered trademarks of Microsoft Corporation. Adobe, PostScript and PostScript 3 are either registered trademarks or trademarks of Adobe Systems Incorporated in the United States and/or other countries. PCL is a registered trademark of Hewlett-Packard. WORK80® is a registered trademark of Matsushita Electric Industrial Co., Ltd. All other brand or product name are the property of their respective holders.

This Product is designed to reduce hazardous chemical substances along with the RoHS directive

Panasonic®

Panasonic Digital Document Company
Unit of Panasonic Corporation of North America

One Panasonic Way, Secaucus, NJ 07094
For a local dealer, please call 1-800-742-8086
panasonic.com/office



As an Energy Star® Partner, Panasonic has determined that this product meets the Energy Star® Guidelines for energy efficiency.



ISO 9001 Quality Management System

Our business processes which produce document, information and network products, from manufacturing to marketing, conform to ISO9001 Quality Management Systems standards. Design, development, manufacture, installation, repair and maintenance of document, information and network products, their associated devices and consumables. In addition, the plants outside Japan have acquired ISO 9001 certification.