

## Print Audit: Analyze, reduce, and recover printing costs

Toshiba Document Solutions combine Toshiba e-STUDIO systems with powerful software applications and targeted business process improvements to enable you to more effectively *distribute, manage, and organize* your documents.

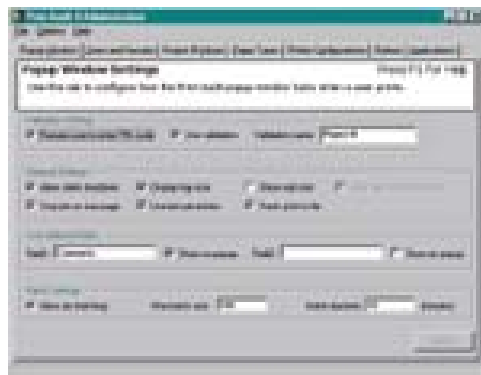
Printing is the third-largest cost in many organizations, and although it weighs heavily on the bottom line, this cost is rarely examined properly by managers.

Print Audit 4 gives you the tools to analyze, reduce and recover print costs for a healthier bottom line.

Print Audit software, from Print Audit, Inc., is a client-based application that tracks and analyzes print activity throughout an organization, including locally connected printers. The combination of powerful Print Audit software and

high-efficiency Toshiba hardware can significantly improve profitability and productivity within any organization, large or small, in any industry.

Print Audit software comes in two versions: the flagship Print Audit 4 and the high-value Print Audit Analysis.



Print Audit 4 Administration Dialog Screen

### Print Audit 4

Print Audit 4 is a highly evolved print management tool that tracks printing and plotting to all networked, local, and direct-to-IP printers. It allows your organization to analyze, reduce, and recover printing costs and resources.

#### Analyze

Right out of the box, Print Audit 4 captures and tracks the name of every document printed and keeps an electronic record of who printed what document, when, and on which device. Print Audit 4 delivers the critical data that your organization needs for cost-cutting. This printing data can easily be imported into any accounting, spreadsheet, or reporting package, and there are two reporting tools to select from: Print Audit Viewer, which allows flexible viewing, filtering, sorting, exporting and printing of all print job data; and Print Audit Reporting, which offers pre-formatted reports and graphs of your data. You will now make accurate budget calculations and cost comparisons, exposing your hidden printing costs—such as using old technology versus newer digital printers, or printing in color vs. black and white.

#### Reduce

Once you have a complete picture of your organization's printing activity, you can begin to reduce costs significantly. For example: at your direction, Print Audit 4 can suggest—or demand—that users re-direct print jobs to the most cost-effective printer or digital copier. Newer, properly deployed hardware and user job-cost alerts are just two of the many other implementations that can cut your printing costs.

# solutions

## Print Audit software

### Recover

Print Audit 4 is also a cost recovery tool: any organization that charges back its customers or charges users for printing—such as law firms and university print centers—will find that Print Audit 4 is the perfect tool for tracking and managing this process.

### Additional features

- **Easy Set-up:** With its easy setup wizard, Print Audit 4's ease of installation is renowned among current users. Once the program is installed on the administrator's computer, client software can be installed silently through the use of scripts or mass installer programs such as SMS and Zen Works.
- **Flexibility:** A maximum number of allowable pages per print job can be assigned to individual printers or groups of printers. Individual applications may be assigned different tracking criteria, including not tracking, tracking with a defined pop-up user interface, or silent tracking with no pop-up.
- **Security:** The security of Print Audit 4 is bulletproof: it can't be overridden by users.
- **Performance:** Print Audit 4 is workstation-based, so it tracks every print job and obtains more information than competitive software.

### Print Audit Analysis

Print Audit Analysis is a high-value version of Print Audit 4. Designed to allow the gathering of printing data at a low cost, it delivers superior tracking flexibility,

ease of installation and use, and a high level of security. And like Print Audit 4, it is the only product currently available that can identify local and unauthorized printers.

### Print Audit System Requirements

- Operating system: Supports all Microsoft Windows operating systems from Windows 95 to recent.
- Minimum processor: Pentium or equivalent 386 or above.
- Databases: Support for Access, SQL, and Oracle database back ends.
- HDD space: Less than 2MB installed on the workstation.

### Print Audit and Toshiba

Print Audit 4 and Print Audit Analysis can help organizations to analyze printing activity and reduce and recover printing costs. Call your Toshiba representative today for more information on how Print Audit and other Toshiba Document Solutions can help your organization.

---

Print Audit:  
Superior tracking,  
easy installation,  
and bulletproof  
security.

---

## TOSHIBA

Don't copy. Lead.

#### Corporate Office

2 Musick  
Irvine, California 92618-1631

#### East Coast

959 Route 46 East, 5th Floor  
Parsippany, New Jersey 07054  
Tel: 973/316-2700 Fax: 973/263-2393

#### Midwest

8770 W. Bryn Mawr Ave., Suite 700  
Chicago, Illinois 60631  
Tel: 773/380-6000 Fax: 773/380-8077

#### South

4855 Peachtree Industrial Blvd., Suite 210  
Norcross, Georgia 30092-3024  
Tel: 770/209-8540 Fax: 770/209-8556

## PRINT AUDIT

Print Tracking & Auditing Software

#### West Coast

142 Technology, Suite 150  
Irvine, California 92618  
Tel: 949/462-6262 Fax: 949/462-2700

#### Web Site

www.copiers.toshiba.com  
or www.fax.toshiba.com